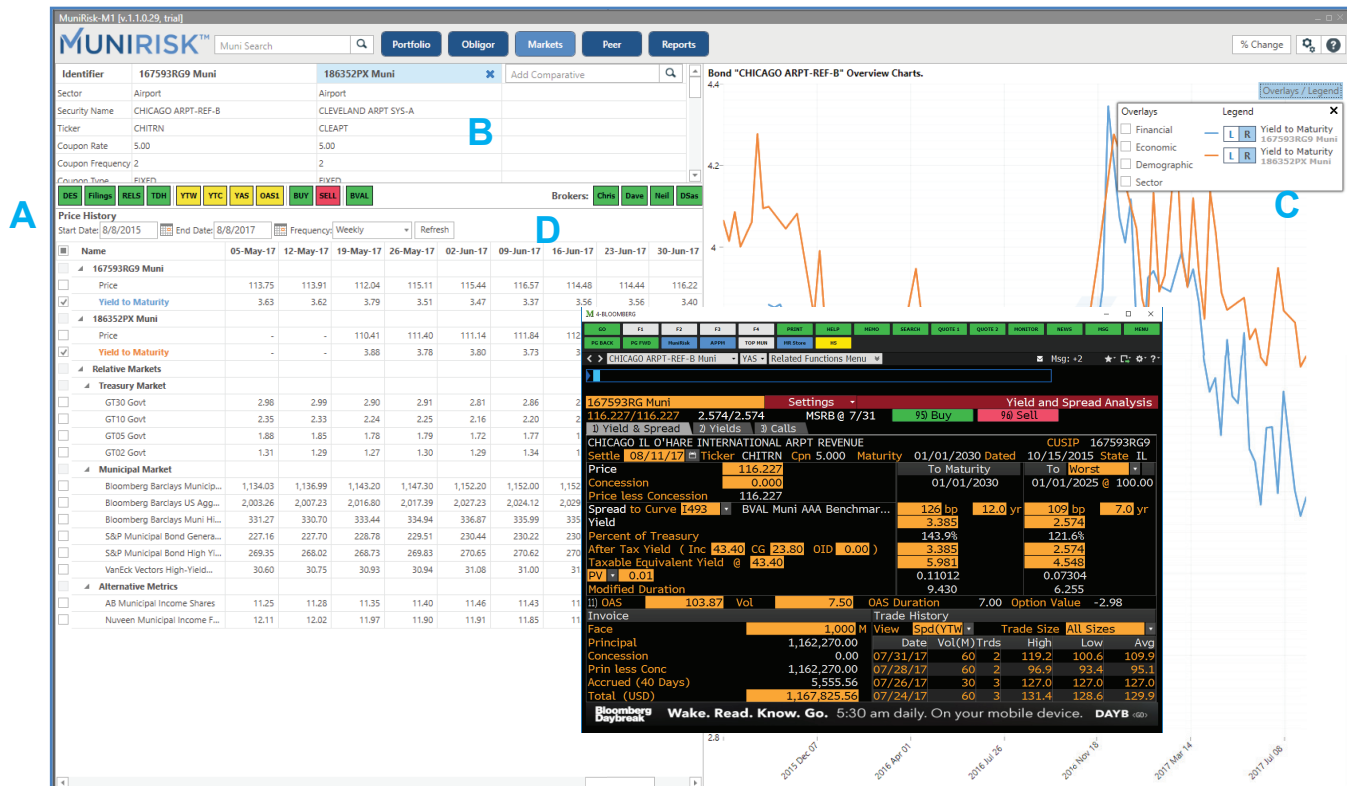


COMPARE CREDIT FUNDAMENTALS TO MARKET PERFORMANCE

From Obligor View, click Markets View to get a 360-view of your credit alongside up-to-date market performance and trade data. Note: To access Markets View, you must first pull up a single security in Obligor View.

- Chart price, yield, spread, as well as trade activity. Adjust time period and frequency as needed. **A** Visualize their performance using the chart. **C** See the Charts User Guide for further details.
- Compare performance with similar bonds. Plug in a comparative bond's CUSIP **B**. Add up to two comparatives bonds.
- Overlay markets data with credit data by using the Overlays / Legend button above the chart. **C**
- Enter Buy and Sell Tickets with seamless Bloomberg integration via Terminal Connect.
- Run other high value muni functions such as YTW, YTC or YAS (depicted below). **A** See Terminal Connect User Guide for full details on functions you can run from the app.
- Program Broker buttons **D** to IB Chat and execute / exchange ideas with key contacts.

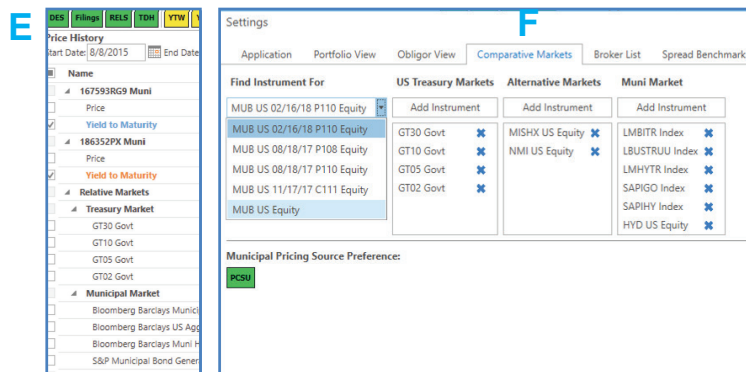


COMPARE FUNDAMENTALS TO MARKET, CONT'D

Monitor Relative Market Trends

Benchmark your bond with treasuries, municipal indices, ETFs, as well as alternative markets. **E** Set the markets you want to follow using the Comparative Markets tab under the Settings Menu. **F**

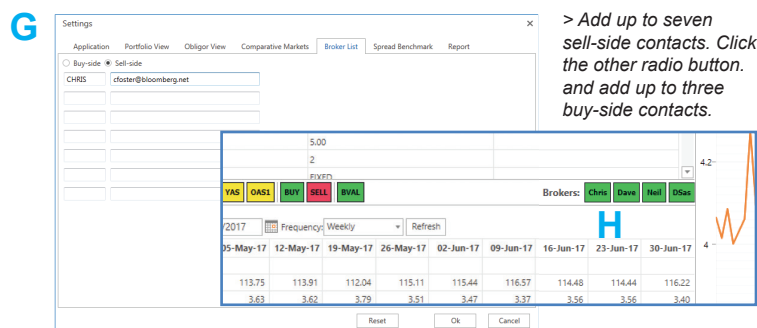
- Key in a security's identifier (CUSIP, Equity, Index, ETF, Treasury, etc.) and hit ENTER.
- Select the relevant security from the list of results.
 - Click the Add Instrument button for the relevant section you want to add it to.
- Remove a market with the X. Click OK to save settings.



“Speed Dial” Key Contacts

Under the Settings menu **G**, program contact Broker List buttons within Markets View to IB them **H**

- Enter the button's label in the first field (e.g., firm initials, contact's first name) and the corresponding Bloomberg email in the second field.
- Click OK to save.



Set Spread Benchmark

Under the Markets View, you can view a bond's price, yield and spread (as well as trade activity). Based on your preference, you can set a selected Spread Benchmark from the following options:

- BVMB* Index (BVAL Municipal AAA benchmark)
- MMAI Index (Municipal Markets Advisors)
- YCGT00* Index (U.S. Treasury Actives Curve)

Simply make your selection in the Settings Menu. **J**

